

Automated
laser marking system
SIM-Marker Compact



Expertise based on experience®

Successful together!

SIM Automation GmbH

Manufacturer of:

- Customised assembly systems
- Testing and inspection systems
- Feeding systems

If you need:

- Product traceability
- A self-contained marking system with integrated autofocus for simultaneous X, Y and Z-axis control of the laser beam
- Fully automated marking of your products, e.g. with barcode, DMC code, series and batch number or plain text for quality-related information
- A customised solution

Keyence Deutschland GmbH

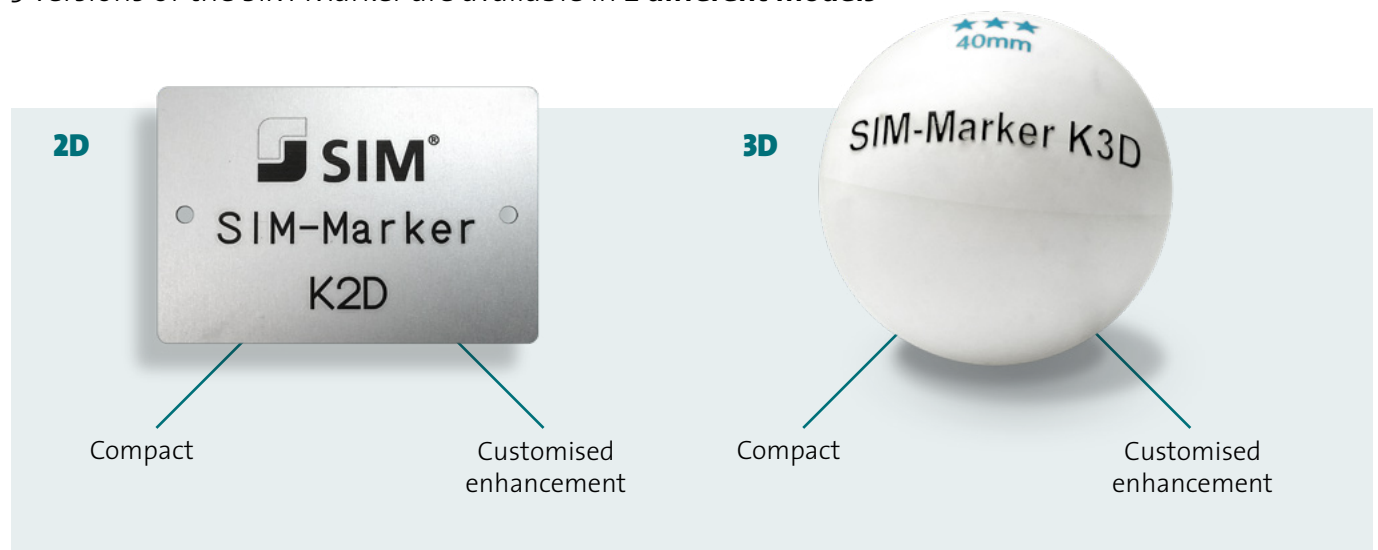
Manufacturer of:

- Laser marking equipment
- Sensors / optical measuring technology
- Microscopes / macroscopes



The SIM-Marker Compact is the right choice for you!

3 versions of the SIM-Marker are available in **2 different models**



SIM-Marker versions

Compact

- Mechanical Z-axis, focal point is set manually using adjusting wheel
- Opening and closing of lift door with operator push-buttons (electrical)
- Opening time of lift door < 2.0 seconds
- PC link

Customised

- Customised version of the SIM-Marker to meet customer requirements

Laser variants

MD-X series



MD-F series



ML-Z series



MD-X series

Keyence YVO₄ laser marking system
13W / 25W

- Marking of metal, plastic and ceramic
- Processing of thin films and all-purpose applications
- Integrated camera for reading 2D codes

MD-F series

Keyence fibre laser marking system
30W / 50W

- Marking of metal, plastic and ceramic
- High-performance engraving of metals

ML-Z series

Keyence CO₂ laser marking system
30W

- Marking of paper, plastic, glass and ceramic
- Processing of special materials such as films

Technical information about integrated laser

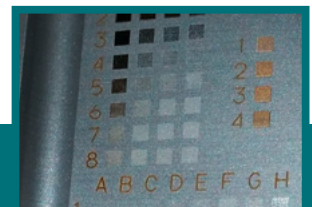
Marking area	<ul style="list-style-type: none"> ■ From 120 x 120 mm to 330 x 330 mm ■ Tray insert containing several parts for marking reduces loading time
Marking resolution	<ul style="list-style-type: none"> ■ 2–5 µm (depending on type)
Scanning speed	<ul style="list-style-type: none"> ■ Max. 12,000 mm/sec
Integrated performance monitoring	<ul style="list-style-type: none"> ■ With alarm output ■ Ensures constant quality of marking and therefore increases process reliability
Option	<ul style="list-style-type: none"> ■ Software for reading 2D codes

Also possible with the SIM-Marker

- Focal point can be set within a range of 42 mm (±21 mm)
- Autofocus with 3-axis laser control (simultaneous control of the X, Y, and Z-axis of the laser optics)
- Distortion-free marking of 3D objects such as slanted surfaces, cylinders, spheres and cones

SIM-Marker Compact data sheet

Standard	<ul style="list-style-type: none"> ■ Laser marking cell in table design: 630 x 1,000 x 920 mm (W x H x D, external measurements) ■ Clamping plate with T-slots: 400 x 400 mm ■ Z-axis adjustment area: 200 mm ■ Max. height of the part to be marked: 200 mm ■ Lift door opening: 270 x 320 mm (H x D) open at three sides ■ Viewing window in lift door: 290 x 210 mm ■ Suction hose: Ø = 50 mm (installed in the laser marking cell) ■ Electrical connection: 230 V~ ■ Interior lighting
Options	<ul style="list-style-type: none"> ■ Movable external extraction system with “universal” filter insert



Other SIM markers

The SIM-Marker



- Lift door opening: 625 x 375 mm
- Clamping plate with T-slots: 400 x 500 mm
- Z-axis adjustment area: 300 mm
- Maximum height of the part to be marked: 300 mm

The SIM-Marker Plus



- Lift door opening: 1,000 x 505 mm
- Clamping plate with T-slots: 800 x 800 mm
- Z-axis adjustment area: 500 mm
- Maximum height of the part to be marked: 500 mm

SIM – Expertise based on experience

SIM Automation GmbH has been a manufacturer of special-purpose machines for over 50 years and focuses on developing and manufacturing **individual, customised all-in-one solutions**. The product range includes assembly systems and feeding technology as well as testing and inspection systems and system components.

We work in the following sectors:

- Medical technology
- Pharmaceutical diagnostics
- Cosmetics
- Automotive
- Electrical engineering

Your expert partner

- Production facilities are technically and economically optimised to meet customer requirements
- Improved availability with SIM quality and SIM service
- Certified according to DIN ISO 9001:2008



SIM Automation GmbH
Lieseßühl 20
37308 Heilbad Heiligenstadt
Germany

Telefon: + 49 3606 690-0
Telefax: + 49 3606 690-370
info@sim-automation.de
www.sim-automation.com

